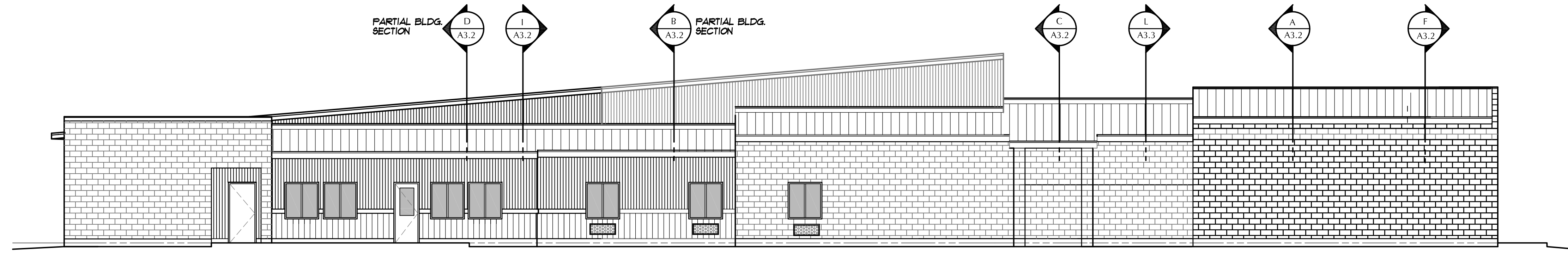


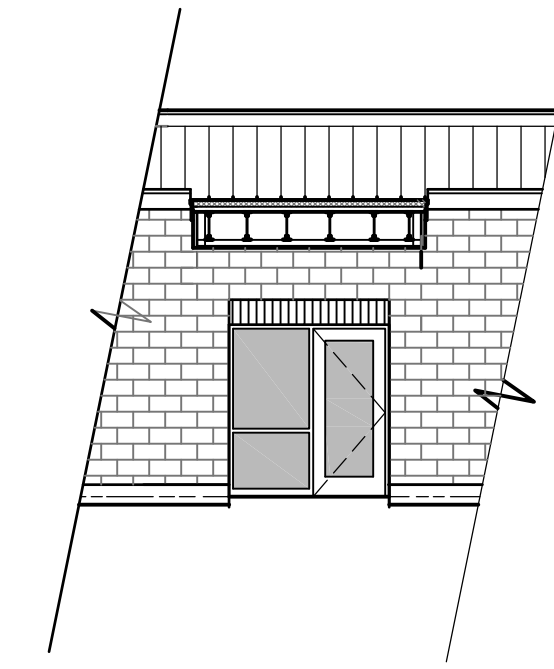
NORTH ELEVATION

1/8" = 1'-0



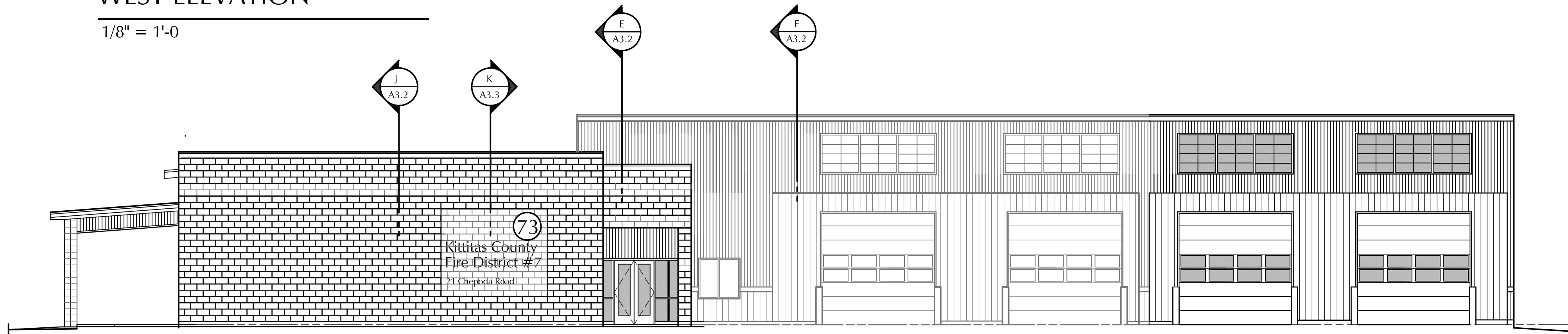
WEST ELEVATION

1/8" = 1'-0



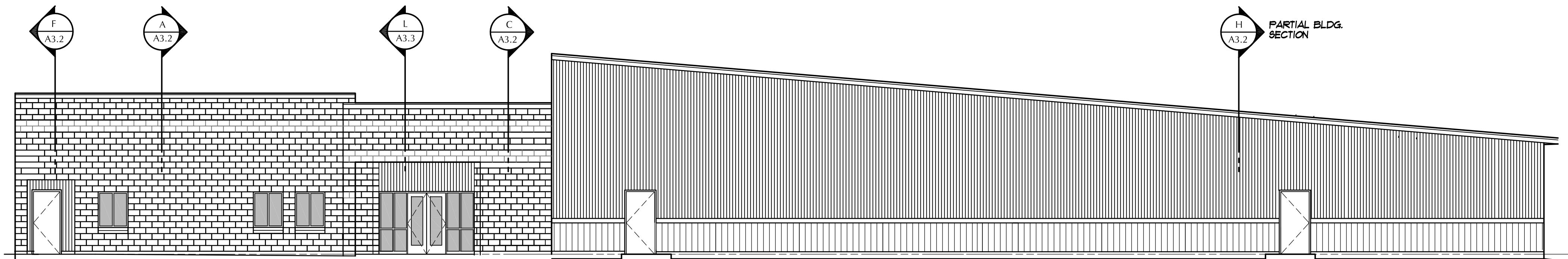
PARTIAL WEST ELEVATION AT ENTRY

1/8" = 1'-0



SOUTH ELEVATION

1/8" = 1'-0



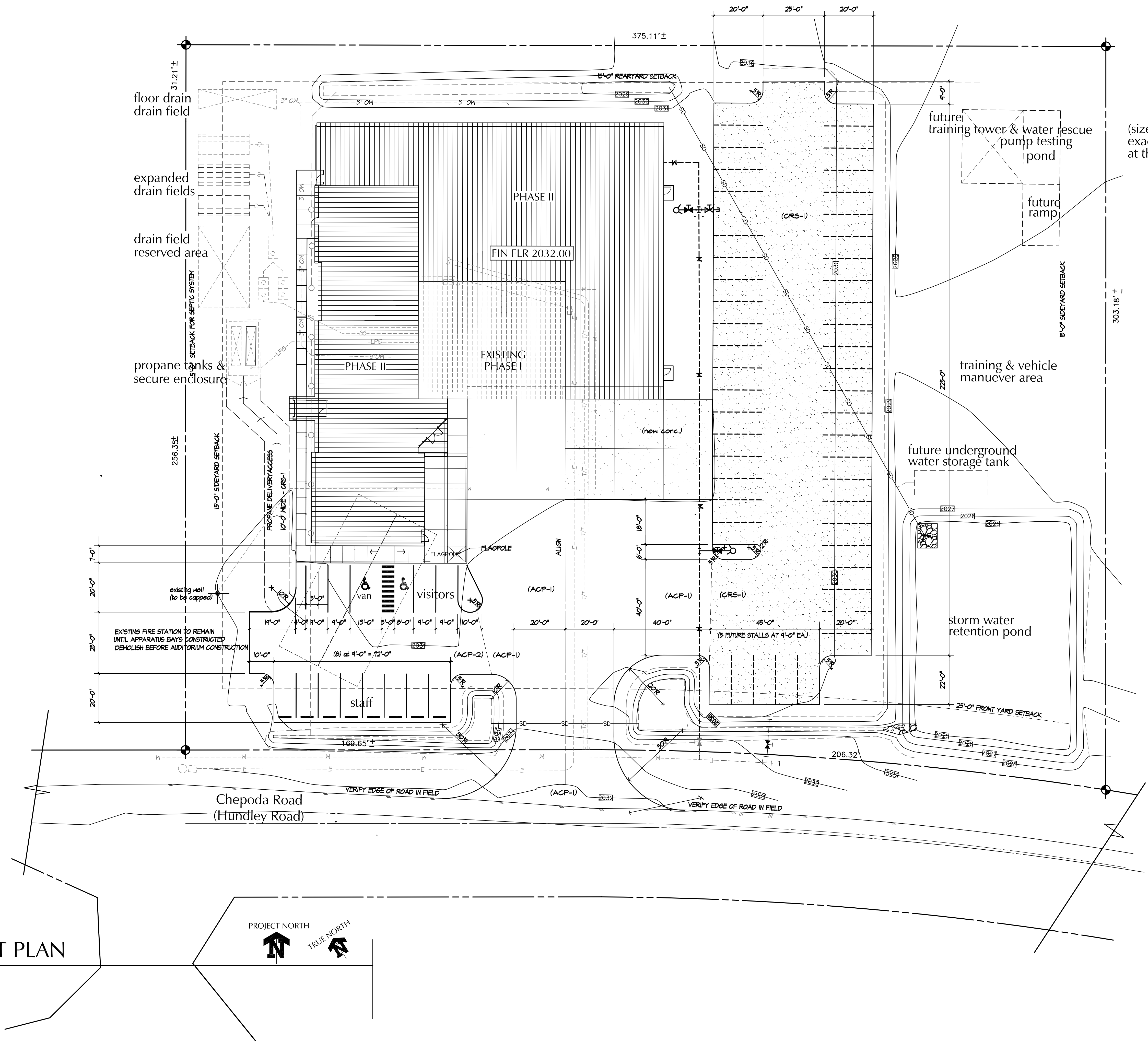
EAST ELEVATION

1/8" = 1'-0

N:\0805\Task 11\0805.2\11\Construction Documents\0805-A301.rvt.dwg, 3/13/2013 1:42:31 PM, The DOH Associates, PS

PHASE II ADDITIONS TO FIRE STATION No. 73
KITTITAS COUNTY FIRE DISTRICT #7
 21 Chepoda Road @ I-90, Cle Elum, Washington 98922

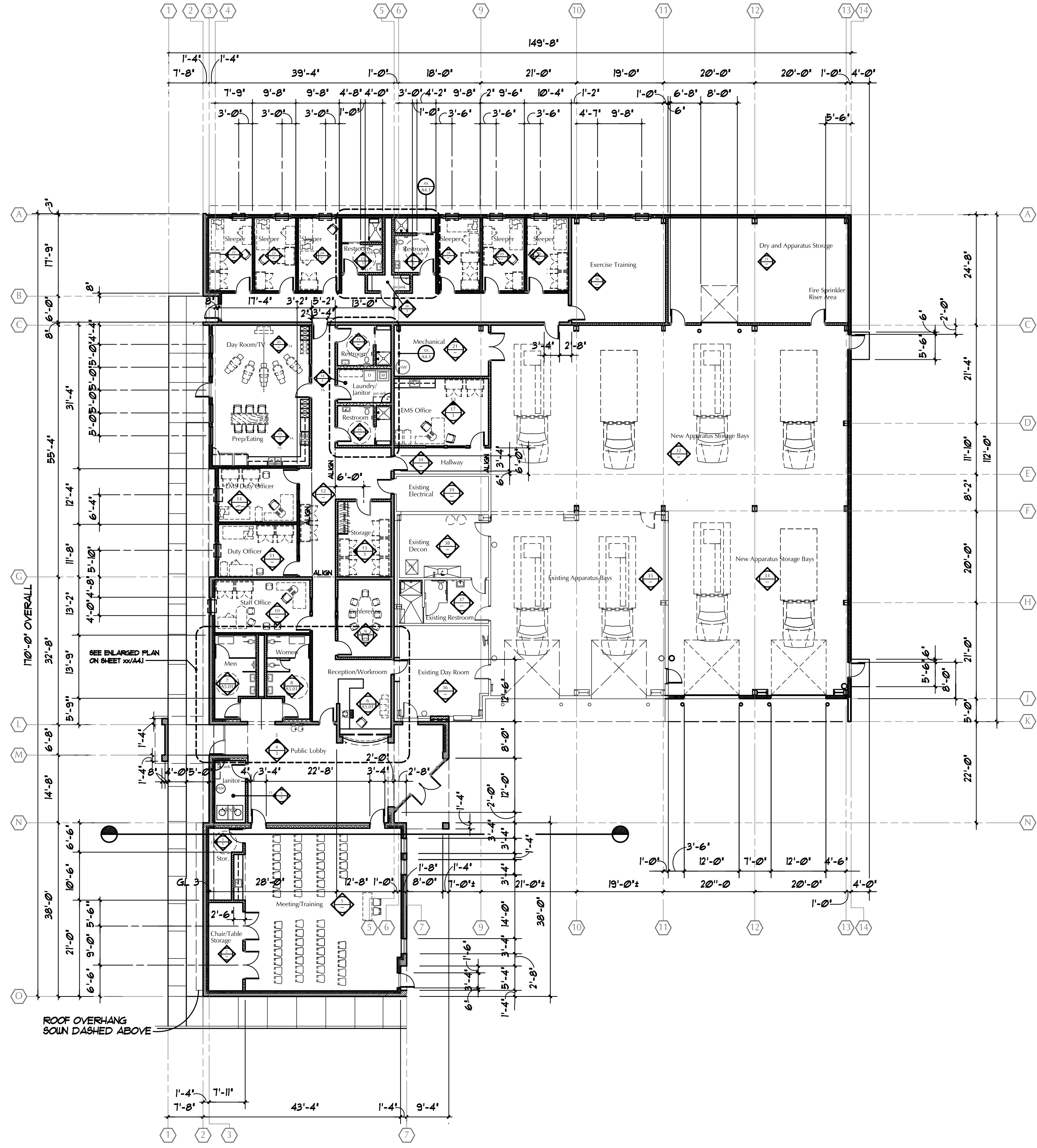
The DOH Associates, PS
 ARCHITECTS and PLANNERS
 7 N Wenatchee Ave Suite 500, Wenatchee, Washington 98801
 Telephone (509) 662-4781 Facsimile (509) 663-3253



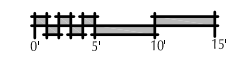
(sizes, heights, depths and exact locations unknown at this time)

SITE DEVELOPMENT PLAN
 SCALE : 1" = 20'-0"

N:\0805\Task 11\0805_2.dwg (Construction Documents\0805\01.dwg) 3/13/2013 12:42:56 PM, The DOH Associates, PS



FLOOR PLAN



2888 REGISTERED ARCHITECT
 DAVID R. SCHOTT
 STATE OF WASHINGTON
 copyright 2010 The DOH Associates

**PHASE II ADDITIONS TO FIRE STATION No. 73
 KITTITAS COUNTY FIRE DISTRICT #7**
 21 Chepoda Road @ I-90, Cle Elum, Washington 98922

The DOH Associates, PS
 ARCHITECTS and PLANNERS
 7 N Wenatchee Ave Suite 500, Wenatchee, Washington 98801
 Telephone (509) 662-4781 Facsimile (509) 663-3253

Job: 0806.2 Date: 03-01-13
 DWG ID - 0000000-